

Washes approximately
750 dishes per hour!

SSS-750



COMMERCIAL DISH WASHER

Sharpline



Australian made – Australian owned

COMMERCIAL DISHWASHER

SSS-750



The Sharpline SSS-750 is a fully automatic dishwasher, washing up to 1000 plates per hour.

Features of the SSS-750 include:

Four wash programs – 60, 80, or 120 seconds that include a 10 second rinse. There is also a manual wash cycle that is ideal for washing utensils.

A large door opening enables the machine to wash large plates.

Counter balanced spring-loaded hood, which makes the machine easy to open and close.

A safety switch instantly stops the machine if accidentally opened.

Rinse temperature thermostatically controlled to 82°C.

The two-pump system ensures constant pressure during the wash and rinse cycles, regardless of mains water pressure.

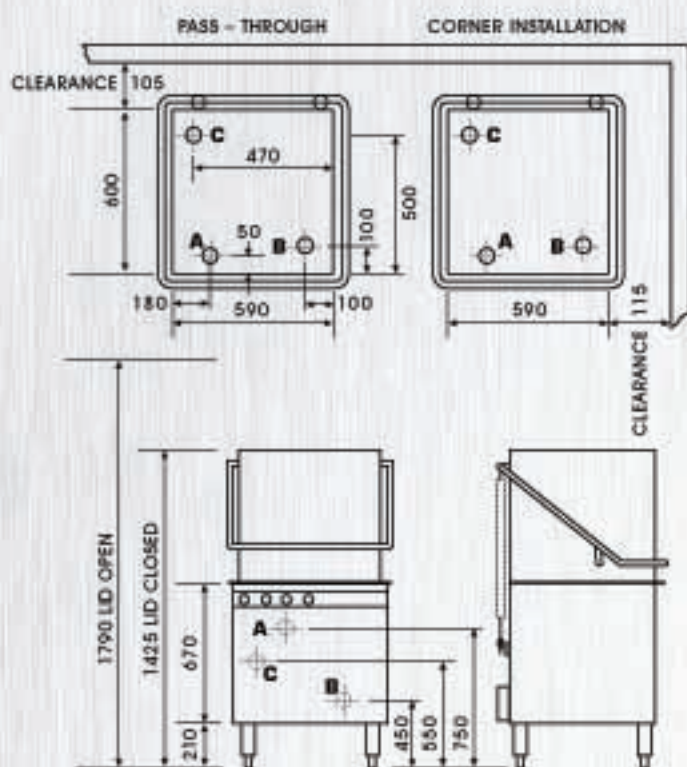
Water consumption is approximately 3.5 litres per cycle.

The SSS-750 can be easily installed in a pass-through or corner operation.

Electrical rating:

Three phase machine total load 5.6 KW.
Single phase machine total load 4.8 Kw.

*For further information visit our web site!
www.sharpline.com.au*



Connection Points

- A** Electrical connection
3 Phase neutral earth
or Single Phase 240 volts
- B** Hot Water connection at 60°C 13mm B.S.P.
Flexible hose supplied.
- C** Drain 50 mm B.S.P.

Sharpline



Australian made – Australian owned

700 Sydney Road (Cnr Gaffney Street)
Coburg Victoria Australia 3058
Phone 03 9354 0277 Fax 03 9354 0278
Email: sharpline@sharpline.com.au
www.sharpline.com.au

STAINLESS STEEL PTY LTD

ABN 95 880 037 140

Specifications subject to change without notice

Design/Production: Ronan Zylinski Advertising Services. 03 9561 9957. ronan.zylinski@bigpond.com